

PowerPlay™ Edge

FIXED RESILIENT SYSTEM

Prefabricated PowerPlay™ Edge panels are manufactured with special angled recessed pad housing. Unlike typical two-stage elastic designs, resilient support uniformly increases as impacts become more aggressive. The recessed pad design also counteracts damage to components by creating full subfloor support under heavy non-athletic loads, and limits pad pressure when pressed beyond athletic impacts.



INFINITY
Wood Floors



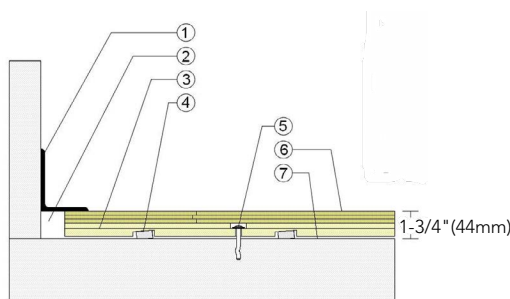
PowerPlay™ Edge

PowerPlay™ Edge provides desired reactive resiliency, uniform basketball rebound, protective recessed pad housing, and stabilizing concrete anchorage.



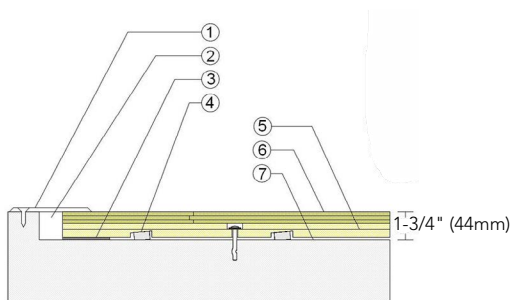
- | | |
|-------------------------------|-------------------------------|
| 1. Infinity MFMA Maple | 4. Recessed ECO Resilient Pad |
| 2. Heavy-duty Concrete Anchor | 5. Vapor Retarder |
| 3. Prefabricated Edge Panel | 6. Concrete Substrate |

WALL BASE



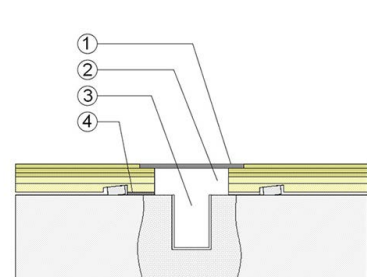
- 3" x 4" (76mm x 101mm) Vent Cove Base
- 1 1/2" (38mm) Min. Expansion Space
- PowerPlay™ Edge Subfloor Panel
- Recessed Resilient ECO Pad
- Concrete Anchor Pin Assembly
- 25/32" (20mm) MFMA Maple Flooring
- Vapor Retarder

THRESHOLD



- 1/4" (6mm) Aluminum Threshold
- 1 1/2" (38mm) Min. Expansion Space
- Solid Blocking at Doorway
- Recessed Resilient ECO Pad
- PowerPlay™ Edge Subfloor Panel
- 25/32" (20mm) MFMA Maple Flooring
- Vapor Retarder

EQUIPMENT



- Floor Plate
- 1 1/2" (38mm) Min. Expansion Space Required at all Insert & Electrical Penetrations
- Concrete Floor Penetration
- Solid Blocking at Insert

Certified



Anchorage

Collared Steel Drive Pin

Green Status and LEED Contributors



- FSC® Certified Maple - MR
- FSC® Certified Subfloor Components - MR
- Environmental Quality - EQ
- Regional Materials - MR

Resilience

1/2" (12mm) ECO Pad

Slab Depression

- 25/32" (20mm) flooring -1 3/4" (44mm)

Optional PowerPlay™ Systems

PowerPlay™ TP
PowerPlay™ Panel
PowerPlay™ Cradle
PowerPlay™ Trax

Subfloor Construction

Pre-manufactured panels

System Type

Fixed Resilient

Testing Laboratory Partners



System Design



It is the policy of Infinity Wood Floors to continuously improve its line of products. Therefore, Infinity Wood Floors reserves the right to change, modify or discontinue systems, specifications and accessories of all products at any time without notice or obligation to purchaser.



see us at
Sweets.com

